

Amazing customer feedback and results with **SizeControl PLEVATEC** system in India

Achieved results at customer Bombay Rayon Fashions Ltd. (India), one of the leading manufacturer of fashion fabrics and garments

Original Message

Subject: RE: Pleva system in the sizing department (02-Jul-2008 15:37)
From: Thavasi Muthu <thavasi@bombayrayon.com>
To: info@pleva-controls.de

Dear sir,
Pl. note that the following are the details against your valuable questions.

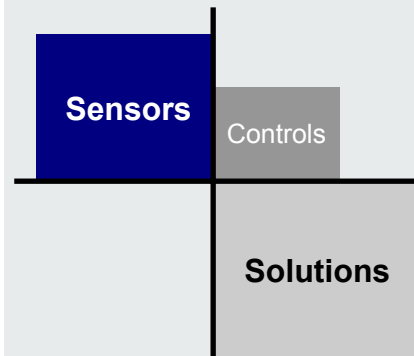
With regards,
P.Thavasi Muthu,
Deputy General Manager (weaving).

1. What was the weaving efficiency before using the Pleva AS120? _____ %
82% to 85% as an average in Yarn dyed fabrics. 86% to 90% in Grey fabrics.
2. What is the weaving efficiency after using the Pleva AS120 with controller? _____ %
84% to 88% as an average in Yarn dyed fabrics. 91% to 94% in Grey fabrics.
3. How much savings (size agent) per month or per year do you have?
14% less cost than the earlier cost
4. Do you have some other benefits?

After introducing this Pleva controller we are getting uniform size pick up in all beams as per our planning according to the various construction of fabrics.
Also operators are working according to the Pleva monitoring and defective beams are reduced.

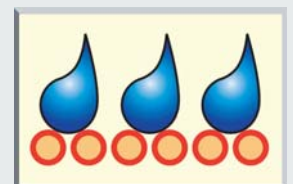


Fig. 1: Microwave measuring head PLEVA type AS120, protected against steam vapor behind the size box.



SizeControl **PLEVATEC**

AS 120



Key advantages of AS 120

- Uninterrupted size application recording
- Optimization of fast and creep speed pressure control
- Increasing and stabilization of weaving efficiency by uniformity of size add-on

Results: 1,5 to 4 % increase in weaving efficiency (1 % more weaving efficiency per loom and year means cost savings of about US \$ 1.000,00. A sizing machine delivers for 100 to 300 looms)

- Reductions in the amount of applied size
 - 10 up to 25 % savings at conventional sizing
 - 25 up to 40 % savings at sizing with pre-wetting
- Simplified desizing
- Reduction of waste water
- Improved quality of the grey goods for the following finishing processes

SizeControl
PLEVATEC

PLEVA Sales and Support in ASIA:



CINTEX AG Glaserstrasse 12
8274 Tägerwilen-Switzerland
E-mail: info@cintex.ch
www.cintex.ch

PLEVA

Headquarter and Manufacturing:
Rudolf-Diesel-Str. 2
D-72186 Empfingen (Germany)

E-mail: info@pleva-controls.de
www.pleva-controls.de

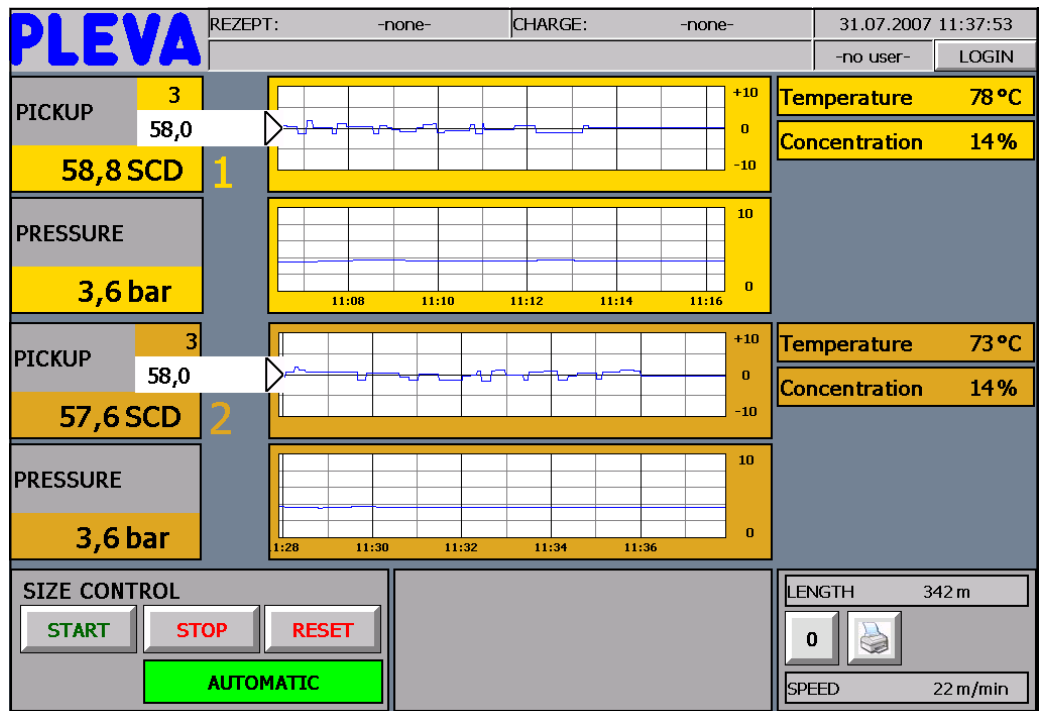


Fig. 2: Screen of the pick-up control on a sizing machine with double size box