

Monitoring and Remote Control on desktop A new feature of the CIMATIC panels

The new generation of control panels CIMATIC is designed to monitor the actual data direct on a local desktop computer over the local network in the office.

The extremely cost efficient control concept for dryers and stenters is based on the well proven PLEVA sensors TDS 95 for fabric temperature, FS 91 for exhaust humidity and RR1 for residual moisture with the advanced CINTEX control system with the software OPTIDRY.



Monitoring and Remote Control from desktop in your office

Monitoring process data from your office

Transparency of your production machine

Stenter frame with CIMATIC control panel, connected to local network to supervise the process from the office

The CIMATIC control panel is standardwise equipped with web functionality. It's possible to monitor the data of the panel PP70/PP100/PP150 via a web browser through Intranet or Internet via LAN.

This features allows your production manager to supervise the production direct from the

desktop computer in the office. In addition he can send data and recipes or read trend data.

For this web function is no additional hardware required, only a connection to the lokal network by Ethernet TCP/IP is required.

Advantages and benefits of the new control concept

- ◆ Monitoring of actual process data from office without additional equipments
- ◆ Transparency and recording of the process data
- ◆ Optimised drying and heatsetting process with automatic control

In this edition

Monitoring and remote control	1
Data Collection from CIMATIC	2

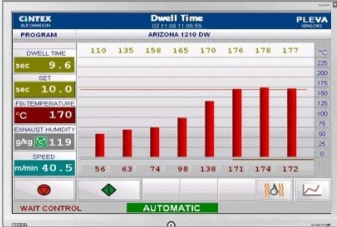
Data Collection on CIMATIC Panel

Data evaluation on-line via LAN on external PC

To develop reproducible processes in finishing consistently monitoring and reporting is essential. The measuring data from the corresponding sensor and calculated fixation data are collected for minimum last 30 days on the control panel.

The data are stored on the flash memory card of the CIMATIC panel as *.SKV files for each day. The files are readable with a common program like EXCEL.

The most efficient way to read and collect the data is via Ethernet LAN network connection.



Online monitoring and remote control

Folder structure on internal Flash Memory Card or USB memory stick

 11052323.000	Datei..	23.05.2011	23:59
 11052423.001	Datei..	24.05.2011	23:59
 11052523.002	Datei..	25.05.2011	23:59

Year - Months - Day - Hours - Number of folder

The last 30 files are stored on the memory card

Data structure of a file

Date	Time	1	2	3	4	5	6	7	8	9	10	11	12	13	14	15
03.08.2011	14:23:14	148	1690	244	119	1751	1741	1650	1380	980	740	630	540	34	33	34
03.08.2011	14:23:24	148	1690	244	119	1751	1741	1650	1380	980	740	630	540	34	33	34
03.08.2011	14:23:34	148	1690	244	119	1751	1741	1650	1380	980	740	630	540	34	33	34
03.08.2011	14:23:44	148	1690	244	119	1751	1741	1650	1380	980	740	630	540	34	33	34
03.08.2011	14:23:54	148	1690	244	119	1751	1741	1650	1380	980	740	630	540	34	33	34
03.08.2011	14:24:04	148	1690	244	119	1751	1741	1650	1380	980	740	630	540	34	33	34
03.08.2011	14:24:14	148	1690	244	119	1751	1741	1650	1380	980	740	630	540	34	33	34
03.08.2011	14:24:24	148	1690	244	119	1751	1741	1650	1380	980	740	630	540	34	33	34
03.08.2011	14:24:44	148	1690	244	119	1751	1741	1650	1380	980	740	630	540	34	33	34

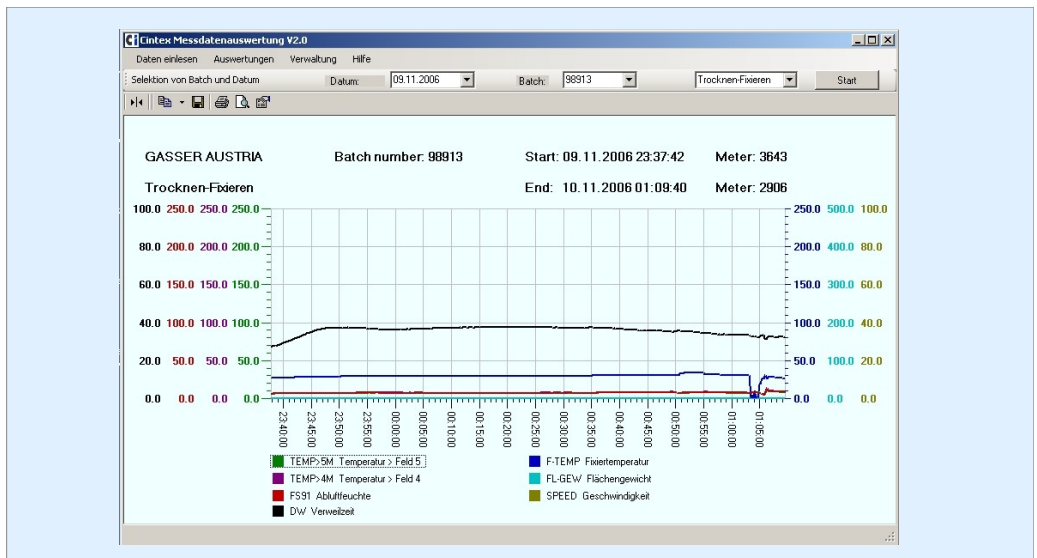
- 1: Act Dwell Time
- 2: Set Fixation Temperature
- 3: Act Speed
- 4: Act Exhaust
- 5: Act Temp 1
- 6: Act Temp 2
- 7: Act Temp 3
- 8: Act Temp 4
- 9: Act Temp 5
- 10: Act Temp 6
- 11: Act Temp 7
- 12: Act Temp 8
- 13: Act Residual Moisture blue
- 14: Act Residual Moisture red
- 15: Act Residual Moisture green



USB Memory stick

Data evaluation off-line on external PC

For data evaluation there is a standard-software available for off-line data evaluation through a USB memory stick with graphical presentation on a external computer.



PLEVA Sales and Support in ASIA:



CINTEX AG Glaserstrasse 12
8274 Tägerwilen-Switzerland
E-mail: info@cintex.ch
www.cintex.ch



Headquarter and Manufacturing:
Rudolf-Diesel-Str. 2
D-72186 Empfingen (Germany)
E-mail: info@pleva-controls.de
www.pleva-controls.de